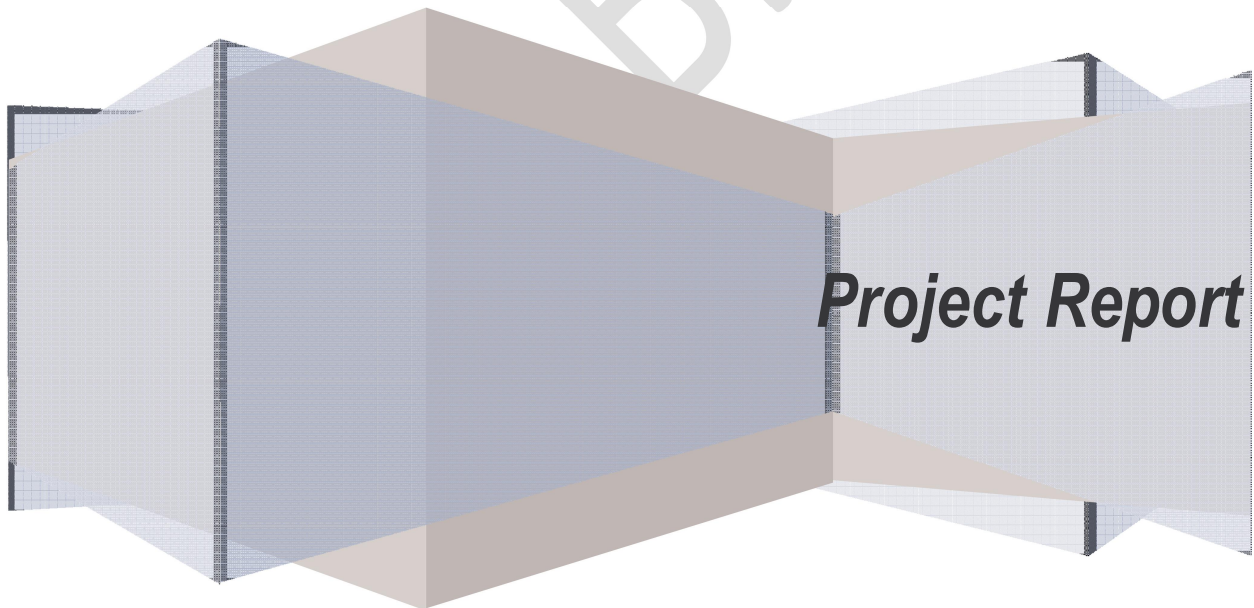


**BOMBAY MULTI-SPECIALITY HOSPITAL
MIRA ROAD EAST, MUMBAI
200 BEDED
(Provisional)**



**PROJECT REPORT
ON
BOMBAY MULTI-SPECIALITY HOSPITAL
MIRA ROAD EAST, MUMBAI
200 BEDED (Provisional)**

**Managed by:
Mutual Empowerment Trust
www.metrust.in**

Current A/c No. 75009101001615

Kokan Mercantile Bank, IFSC Code : KKBK0KMCB02, Branch : Mira Road

*Mutual Empowerment Trust (MET) is a Non-Government Organization, REGD. NO.
E-27696/2011 (Mumbai) involved in helping the needy people for urgent needs.
We provide food, medical help, and educational support to the needy people of all human beings
regularly.*

**Financial Consultant:
Tirmizee Consultancy Services
www.tirmizee.in**

Current A/c No. 75009101001612

Kokan Mercantile Bank, IFSC Code : KKBK0KMCB02, Branch : Mira Road

Under the Guidance of:

Prof. Mohammad Akbar Ali (Founder & Chairman)

Dr. Mohammad Azhar Ali (Operational Head)

Shamim Ahmad (CFO & Finance Head)

Mohammed Akram Shaikh (Marketing Head)

Mohammad Mansoor Alam (PRO)

Adv. Farooque Shaikh (Legal Head)

9, Sterling Mansion, Opp. Asmita House, Near HDFC Bank, Naya Nagar, Mira Road (E), Mumbai – 401107

Interact with : 9322448698 / 8080514101

INDEX

Particulars	Page No.
Objectives	4
Need of Multi-specialty Hospital	5
Beneficiary Covered Area under Project	6
Facilities to be provided in the Multi-Specialty Hospital	7 – 18
Department	19
Promoter Profile in brief & details	20 - 25
Project Requirements - Building	26
Project Building – Layout	27
Bed Distribution	28
What is planned...Investment	29
Revenue collection 1 st Month(Projection)	30
Revenue collection 2 nd Month (Projection)	31
Revenue collection 3rd Month (Projection)	32
Revenue collection 4th Month (Projection)	33
Revenue collection 5 th Month (Projection)	34
Revenue collection 6 th Month (Projection)	35
Monthly Expenses (Projection)	36
Profit & Loss Account for 5 Years (Projection)	37
Thanks	38

OBJECTIVES

Healthcare facilities have a very important role in improving the quality of life of people. With a greater health awareness and consciousness, there is a rising demand for better healthcare facilities and services.

Considering this rising demand, the proposed Multi Specialty Hospital has following objectives:

- To start, establish, maintain, operate, run and manage '*State-of-the-art Multi- Specialty Hospital*' for the reception and treatment of persons suffering from different types of illness or malady.
- To install best available medical technologies of international standards for attainment of aforesaid objective.
- Promote the highest level of rehabilitation and independence through restorative nursing care using a team approach and collaborating with therapy disciplines as appropriate.
- To start, establish, maintain, operate, run and manage an efficient ambulance service, blood storage center and pharmacy stores to support the Multi- Specialty Hospital.
- To do all acts, deeds or things as are necessary or expedient for advancement or attainment of aforesaid objects.

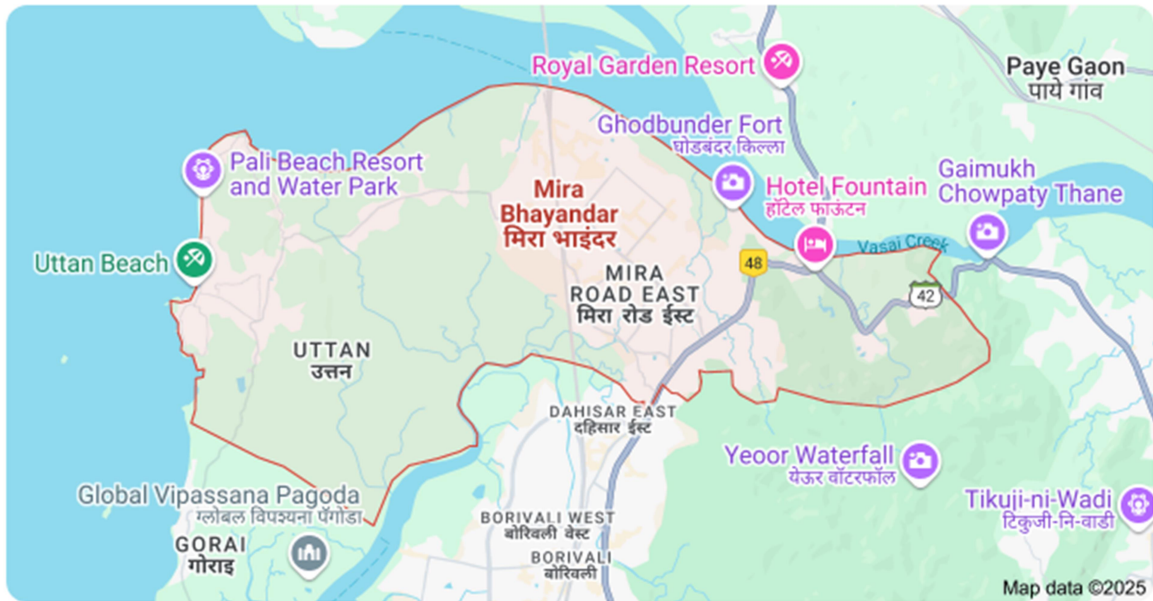
NEED OF MULTI-SPECIALTY HOSPITAL

- Multi-specialty hospital is a single point solution for patients that offers diagnosis and treatment facilities across various clinical specialties.
- Multi-Specialty hospital provides *standardized, specialized and synchronized* diagnosis and treatment facilities under one roof.
- Multi-specialty hospitals are needed because number of patients with various diseases is increasing because of rising population.
- Population of the elderly people is increasing because of increasing life expectancy – resulting in demand of multi-specialty hospitals.
- Increase in diseases like diabetes, hypertension and cancer etc. demands for better healthcare services under one roof.
- There are insufficient number of Multi-Specialty diagnosis and treatment facilities in Mira Road, Mira-Bhayandar and adjoining areas.
- There are less than 1.3 beds per 1000 people in India as against a recommendation of 3.2 per 1000 people by the World health Organization.

Need of modern and latest trends and technologies in diagnosis and treatment under one roof.

BENEFICIARY

Covered Area under Project Mira-Bhayandar Municipal Corporation (MBMC) at a Glance



Mira Bhayandar

Maharashtra



Share

Located : Longitude and Latitude 19.2952° N, 72.8544° E

Density - 10,000/km² (26,000/sq mi)

Area of Mira-Bhayandar - 74.7 km²

Population Current estimated population of Mira-Bhayandar Municipal Corporation in 2025 is approximately 1,182,000.

FACILITIES IN THE MULTI-SPECIALTY HOSPITAL

The proposed Multi Specialty hospital will offer comprehensive diagnosis and treatment in 2 Phases.

DIAGNOSTIC DEPARTMENTS

RADIOLOGY

DIGITAL X RAY (WITH OPG)



X-rays are especially useful in the detection of pathology of the skeletal system, but are also useful for detecting some disease processes in soft tissue. Some notable examples are the very common chest X-ray, which can be used to identify lung diseases such as pneumonia, lung cancer or pulmonary edema, and the abdominal X- ray, which can detect intestinal obstruction, free air (from visceral perforations) and free fluid.

ULTRA SONOGRAPHER & COLOUR DOPPLER



Diagnostic Sonography (Ultrasonography) and Color Doppler is an ultrasound- based diagnostic imaging technique used to visualize subcutaneous body structures including tendons, muscles, joints, vessels and internal organs for possible pathology or lesions. Obstetric sonography is commonly used during pregnancy and is widely recognized by the public.

CT SCAN



A CT (Computed Tomography) scan, also known as a CAT scan, is a diagnostic imaging test that uses X-rays and a computer to create detailed images of the inside of the body. These images are used to help doctors diagnose various medical conditions, plan treatment, or monitor how well treatment is working.

2D ECHO



A 2D echo, or two-dimensional echocardiogram, is a non-invasive cardiac ultrasound that creates real-time images of the heart's structure and function. It uses sound waves to visualize the heart's chambers, valves, and blood flow, helping doctors assess heart health and diagnose various conditions.

STRESS TEST

A "stress test," also known as an exercise stress test, is a diagnostic tool that assesses how well your heart functions under physical strain. It typically involves walking on a treadmill or pedalling a stationary bike while monitored with an electrocardiogram (ECG).



ECG / EEG / EMG

ECG, EEG, and EMG are three different types of tests used to measure electrical activity in the body: ECG (Electrocardiogram) measures the heart's electrical activity, EEG (Electroencephalogram) measures the brain's electrical activity, and EMG (Electromyography) measures the electrical activity of muscles.

ECG (Electrocardiogram):

- Records the electrical activity of the heart.
- Used to diagnose heart conditions, such as arrhythmias, heart attacks, and heart enlargement.
- A painless and safe procedure that measures the heart's rhythm and electrical impulses.
- Electrodes are placed on the chest, arms, and legs to record the signals.

EEG (ELECTROENCEPHALOGRAM):

- Records the electrical activity of the brain.
- Used to diagnose epilepsy, seizures, sleep disorders, and other brain conditions.
- A quick, easy, and painless process that involves attaching electrodes to the scalp.
- Can help assess brain activity before or after surgery or injury.

EMG (Electromyography):

- Records the electrical activity of muscles.
- Used to diagnose nerve and muscle disorders, such as muscle weakness, nerve damage, and neuromuscular diseases.
- May involve inserting a small needle into the muscle to record electrical activity.
- Can also evaluate the health of muscles and the nerves that control them.

VENTILATOR

A ventilator, also known as a breathing machine or respirator, is a vital piece of medical equipment used in hospitals to support patients who cannot breathe adequately on their own. It delivers oxygen to the lungs and helps remove carbon dioxide, providing crucial support in critical care situations.



PATHOLOGY LABORATORY

BIOCHEMISTRY ANALYZER



An automated analyzer is a medical laboratory instrument designed to measure different chemicals and other characteristics in a number of biological samples quickly, with minimal human assistance.

HEMATOLOGY ANALYZER



Automated cell counters sample the blood, and quantify, classify, and describe cell populations using both electrical and optical techniques.

URINE TEST

A urinalysis, or urine test, is a medical test that analyses a urine sample to check for various conditions and abnormalities. It can help diagnose or monitor conditions like urinary tract infections, kidney disease, diabetes, and liver disease. The test examines the appearance, concentration, and contents of the urine, including physical, chemical, and microscopic examinations.

SAMPLE COLLECTION CENTER

In Phase 1 the hospital will have Tie-up with external Pathology Laboratory for all other types of tests that need specialized equipment.

Patient samples shall be collected in the Sample Collection Center and then shall be sent to the outsources Pathology Laboratory.

OUT PATIENT DEPARTMENTS (OPD)



MEDICINE OPD

This is a medical specialty dedicated to the diagnosis and medical treatment of adults.

CARDIOLOGY OPD

Cardiology is a medical specialty dealing with disorders of the heart. The field includes diagnosis and treatment of congenital heart defects, coronary artery disease, heart failure, vascular heart disease and electrophysiology.

SURGERY OPD

GYMEA & OBSTETRICS OPD

PAEDIATRIC OPD

E.N.T. OPD

OPHTHALMOLOGY OPD



DENTISTRY



HOMEOPATHY OPD

NATUROPATHY OPD

OPERATION THEATERS

MAJOR OPERATION THEATERS

This hospital will focus on the use of latest technologies for surgical procedures like *minimally invasive surgeries*.

Telescopic / Laparoscopic surgeries have several advantages over conventional procedures like minimal length of stay and minimal usage of antibiotics etc.



MINOR OPERATION THEATERS

LABOUR ROOM

INTENSIVE CARE UNIT

ADULT ICU

Fully equipped Intensive Care Unit for adults.



PEDIATRIC ICU

NEONATAL ICU



IN PATIENT DEPARTMENT



PHYSIOTHERAPY / REHABILITATION

EMERGENCY / CASUALTY

AMBULANCE SERVICES



DEPARTMENTS

- Reception
- Admission
- Anaesthetics Department
- Cardiology
- Counseling
- Dentistry
- Dermatology
- Dietetics
- Emergency Department
- Endocrinology
- ENT
- Gastroenterology
- General Medicine
- General Surgery
- Hematology
- Homeopathy
- Infection Diseases
- Intensive Care Unit
- Interventional Radiology
- Neurology
- Nephrology
- Naturopathy
- Obstetrics & Gynaecology
- Oncology
- OPD
- Ophthalmology
- Orthopaedics
- Paediatrics
- Pharmacy
- Pathology
- Psychiatry
- Physical Medicine & Rehab
- Pulmonology
- Radiology
- Rheumatology
- Surgery
- Urology
- Pathology
- MRI
- CT Scan
- Oncology (Cancer)

Profile in Brief of Mohammad Akbar Ali (M.A. Akbar)

Email: tirmizee@gmail.com

Mobile: +91-9322448698

Career Objective

To utilize my talents and capabilities in a dynamic organization for continuous growth & learning, benefiting both the organization & society.

Vision

I aim to uplift communities from poverty and educational backwardness by promoting national integration and providing career options through education, entrepreneurship, and technological advancement. My goal is to offer opportunities for growth and success to people from all walks of life.

Mission

To provide quality higher education to students from all communities, with a particular focus on the Muslim community, fostering competent, dedicated, and responsible citizens committed to secularism and national integration.

Philosophy

"Think Big, Think Fast, Think Ahead, Think Different, Aim for the Best!"

Professional Profile

- **Occupation:** Educationist, Academician, Humanist
- **Experience:** Over 30 years in administration and education
- **Core Values:** Integrity, Excellence, Unity, and Service to humanity

Educational & Professional Qualifications

- **MCA (Master in Computer Applications), First Class**
- **B.Sc., First Class**
- **Certifications in Oracle, SQL Server, Visual Basic, and Networking**
- **Post Graduate Diploma in Computer Science, Grade "A"**

Professional Experience

- **Lecturer at Bandra Jr. College (2006–present)**
- **Founder of Meera Infotech (2002–present)**
- **Founder of Tirmizee Consultancy Services (2004–present)**
- **Software Specialist at Ventus Infotech System (2000–2004)**

Achievements

- **Books Written: "Computer at a Glance"**
- **Awards: Peace Award by Wisdom Foundation (2009)**

Social Contributions:

- **Founder and President of Mutual Empowerment Trust;**
- **Established Vcare Multi-speciality Hospital (2022),**
- **and multiple community organizations.**

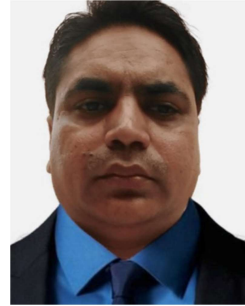
Social Engagement

- **Member of several welfare societies and educational trusts**
- **Active in community welfare, health care, and education initiatives**

Profile in Details of Mohammad Akbar Ali (M. A. Akbar)

Email : tirmizee@gmail.com

Mobile : +91-9322448698 - +91-8080514101



CAREER OBJECTIVE:

- “Challenging position in dynamic and progressive organization where I can utilize my talent and capabilities for continuous learning and growth for myself, for the organization and humanity”.

VISION:

- To bring out all Communities from the quagmire of poverty and educational backwardness. To encourage, enlighten and prepare all community members to become useful citizens who will contribute to make a prosperous, healthy and strong nation. To promote national integration, harmony and peace by giving equal opportunities to all communities for their promotion and progress.
- Have a broad vision of building the nation by providing better career options to students and entrepreneurs through knowledgeable assistance needed to master tomorrow’s technologies today.
- Committed towards the success of like-minded people; The philosophy runs like this - when you grow, we grow together, by innovative marketing strategies and plans which provide values to Franchisees, Employees, Clients, Share Holders, Business Associates and Society at large.
- Have further plans of adding a feather to our crown as Mutual Empowerment Trust, through which we will be offering better service to the society in the field of Higher Technical Education by setting up Schools, Colleges and Technical Institutes.
- Having a broad vision of building the nation by providing better career options to all community, students and entrepreneurs through knowledgeable assistance needed to master tomorrow’s technologies today.
- To encourage development of agriculture, culture, science, Computer and IT technology to be the master of tomorrow.

MISSION:

- To impart quality higher technical education to the students of Muslim Community in particular and to students of all other communities to be competent, dedicated and responsible citizens who shall also be the harbingers of secularism and national integration to the complete satisfaction of all stake holders.
- To foster high standards and ethics in operation.
- To provide a stimulating environment for individual creativity & enterprise and cherish human intellect.
- To strive for excellence in all aspects of operations
- To provide value to Elders, Educationists, Employees, Clients, Share Holders, Business Associates and Society at large.

PHILOSOPHY:

- Short, Simple & Succinct, Think Big, Think Fast, Think Ahead & Think Different, Aim for the best!!

PROFESSION:

- Educationist, Humanist, Academician
- Pioneer In Educational Organizations in Maharashtra and other States also.

PERSONALITY:

- Honest, Upright, Straight-Forward, Polite, Frank, Perfectionist and Meticulous.

RESPONSIBILITY:

- I must continue to be responsible, sensitive to the countries, communities and environments in which we work, always ensuring that what comes from the people goes back to the people many times over.

INTEGRITY:

- We must conduct our Services & business fairly, with honesty and transparency.
- Everything we do must stand the test of public scrutiny.

Excellence:

- We must constantly strive to achieve the highest possible standards in our day-to-day work and in the quality of the education and services we provide.

Unity:

- We must work cohesively with our colleagues across the group and with our students, parent and partners around the world, building strong relationships based on tolerance, understanding and mutual cooperation.

PERSONAL PROFILE:

- Date of Birth : 10th-October-1973
- Marital Status : Married
- Religion : Islam
- Nationality : Indian
- Passport No. : C8912793 VALID UPTO 2035

FAMILY PROFILE:

- Father's Name : Late Haji Mohammad Quamruddin Sb.
(B. Sc., B. Ed., Retired Govt. Teacher)
Founder Secretary of High School Balapur
Farmer, Educationist & Active Social Activist
- Mother's Name : Hajjin Nazma Khatoon
(Educated and Well-mannered House Wife)
- Brothers : Mohammed Asghar Ali (Business)
: Mohammed Anwar Ali (Hafiz-Aalim, Business)
: Mohammed Ashraf Ali (Business)
: Dr. Mohammed Azhar Ali
: Er. Mohammed Mazhar Ali (Business)
- Wife : Shabana Perween Akbar Ali (Graduate)
- Son : Mudassir Ali Akbar (Pursuing 3rd Year Medical Science)
: Musaddiq Ali Akbar (11th with Science)
: Mudabbir Ali Akbar
- Daughter : Aaliyah

FAMILY BACKGROUND:

- Born into an illustrious family, is the eldest son of Haji Mohammed Quamruddin Siddique, Founder of Muslim Education & Welfare Society (1970). He is the First Science Graduate Scholar in Belaganj, Gaya (1968).
- He started Balapur High School, Belaganj, Gaya (1973). Molvi Haji Inamull Haque (Grand Father) was also a Farmer and Educationist. He was running A Maktab for Arabic & Urdu free of cost. Molvi Haji Inamull Haque Siddique s/o Wahid-ul-Haque Siddique s/o Akbar Ali Siddique s/o Qasim Ali Siddique s/o Iqbal Ali Siddique was the Commander General of Bahadur Shah-I (Shah Alam) in 1711 at Jacobabad, Sindh (Now in Pakistan). Have complete family tree since 1711 to till
- Has immense administrative experience in various fields of more than 3 decade.
- An intellectual with a Sufi background, experienced in matters related to religion in resolving various issues arising in the day to day life of the Muslim community.
- Believes in service to mankind as being a kind of worship.
- By profession, an Agriculturist (Farmer), Academician, Educationist, Data Scientist and Research scholar with a higher literacy aptitude and a scholarly approach.
- Serve various Societies / Trusts / Organizations on an honorary basis.

EDUCATIONAL & PROFESSIONAL QUALIFICATIONS:

- Master in Computer Application (MCA) With First Class in 1995-1998.
- Post Graduate Diploma in Computer Science with Grade "A" in 1994-95
- Certified Course of Oracle / SQL Server, Visual Basic with Grade "A".
- Diploma in Hardware & Networking with Grade "A".
- Certified Course in Desk Top Publishing (DTP) with Grade "A".
- B. Sc. With First Class in 1990 - 1993.
- H.S.C. with First Class in 1990.
- S.S.C with First Class in 1987.

PROFESSIONAL TRAINING ATTENDED:

- Six Months on Oracle 7.3, 8.0, D2K, Visual Basic 6 & Networking conducted at "Cypress Computer", Mumbai
- Personality development & Management Skill training attended at Mumbai
- Fifteen days on Corporate Training, Networking, File Management, Electronic Publishing, Data Processing, On-Line Job handling conducted at Datamatics Technologies Ltd, Mumbai.
- Personality development & Management Skill training attended at Mumbai

LINGUISTIC PROFICIENCY:

• Languages Known	Read	Write	Speak	Understand
• English	Yes	Yes	Yes	Yes
• Urdu	Yes	Yes	Yes	Yes
• Hindi	Yes	Yes	Yes	Yes
• Arabic	Yes	No	No	No
• Persian	Yes	No	No	Yes
• Marathi	Yes	No	No	Yes

PROFESSIONAL EXPERIENCE:

- Working as a Lecturer with Bandra Jr. College of Sc, Comm & MCVC, Bandra (W), Mumbai since 15th September 2006 to till date.
- Operating "Meera Infotech", Bandra (W), Mumbai since 2002
- Operating "Tirmizee Consultancy Services", Mumbai (It is Complete IT Solution provider in Mumbai) since 1st March 2004.
- Operating TouchDEAL Store, Mira Road, Mumba since 2019
- Operating Vcare Multi Speciality Hospital, Mira Road since 2022.
- Worked as a "Software Specialist" with "Ventus Infotech System" (It is sister concern of USA based company Softype Inc, California) from 19th of March 2000 to February 2004.

INTEREST / ACTIVITIES:

- Teaching, Reading (Religion, History, Politics, Academics) & Writing
- Researching, Planning & Learning Innovative Things
- In the upliftment and education of the backward, the oppressed, women and children(Specially Handicapped, Needy).
- Preservation of culture, Environment, Human Rights with secular outlook but primary to uplift the minorities.

HOBBIES:

- Reading, Music, Traveling & interacting with people

SOCIAL ACHIVEMENTS:

- 1984 - Awarded a 2nd Prize in Belaganj(Gaya), Perkhanda for the Debate on the topic of "Kam Umar mein Shadi"
- 1990 - Awarded me as a Best Organizer Award in our villager at the age of 17 Organized a very huge Rally - Jalsa Refa-E-Aam under the guidance of Maullana Ruknu-ddin Asdaque (Founder Member of Idar-e-Shariya, Patna & Madarsa-e-Makhdum Ashraf, Bihar Shariya)
- 1990 - Founder-Member of Anjuman Reza-e-Mustafa, Kurisarai, Belaganj, Gaya
- 1990 - Founder-Member of Shama Urdu Library, Kurisarai, Belaganj, Gaya
- 1991 - LIFE MEMBER of Muslim Welfare Society, Samaspur, Belaganj, Gaya
- 2004 - LIFE MEMBER of Anjuma-e-Bashindgan Bihar, Mumbai
- 2008 - MEMBER of "All India Muslim Majlis-e-Mushawrat, Delhi",Maharashtra Unit. Worked as a Maharashtra State Secretary under the guidance of Syed Sahabuddin (Ex-MP, Ex-Ambassador, Ex-IFS) 5 years.

- 2009 - Received Peace Award given by the “Wisdom Foundation”, Mumbai, at the hand of Governor of Maharashtra S. C. Jamir
- 2011 - Registered trust in the name of Mutual Empowerment Trust, Mumbai and designated President/Chairman.
- 2012 - Registered a Trust for Health Care activity in the name of Vcare Charitable Trust. Mira Road, Mumbai
- 2022 - Started Vcare Multispeciality Hospital in Mira Road, Mumbai
- 2023 - Founded Secretary Bihar Welfare Association – MiraBhayandar
- 2025 - Planning to take over a school from Junior to 12th Standard in Mira Road, Mumbai
- 2026 - Planning to take start 200 Bedded Hospital in Mira Road. in Mira Road, Mumbai

PROFESSIONAL ACHIVEMENTS AFTER SHIFTING TO MUMBAI:

- 2001 - Training attended for Personality Development and Business Administration
- 2002 - Started own business of Computer & IT in the name Meera Infotech
- 2004 - Started one more company in name “Tirmizee Consultancy Services” designated as MANAGING DIRECTOR/CEO
- 2005 - Written a Book in the name of “Computer at a Glance”
- 2006 - President of one NGO in the name “Mutual Empowerment Trust” for promoting Social, economic and technical education awareness
- 2009 - Expanded Meera Infotech into the new era demand business of Web Portal for promoting and exploring the business to members across the globe
- 2016 - Started under Vcare Charitable Trust a Polyclinic & Diagnostic Centre at Mira Road, as a Trustee demand of Weaker section health problems in cheaper with latest technologies & expert team of Doctors.
- 2017 - Started a Shopping Store the Name of TouchDEAL at Mira Road, Mumbai
- 2025 - Planned to start School & College in Mira-Bhayandar, Mumbai
- 2026 - Planned to start 200 Bedded Hospital in Mira Road, Mumbai

IN FUTURE WILL GO FOR ENGINEERING COLLEGE, MEDICAL COLLEGE

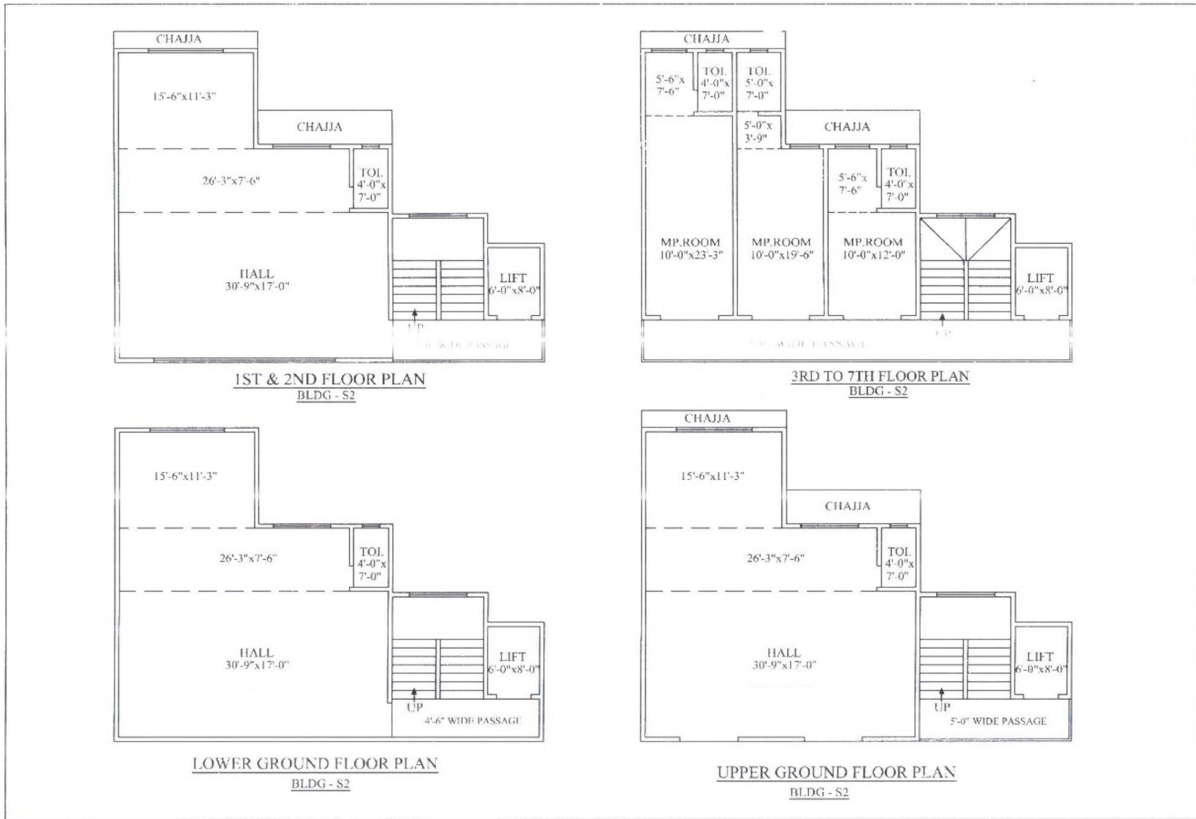
PROJECT REQUIREMENTS



Hospital structure

Location: Mira-Bhayandar

LAYOUT PLAN



AVAILABLE CARPET AREA

Upper Ground Floor	—	1500 Sq Ft
Ground Floor	—	1500 Sq Ft
1st Floor	-	1500 Sq Ft
2 nd Floor	-	1500 Sq Ft
3 rd Floor	-	1500 Sq Ft
4 th Floor	-	1500 Sq Ft
5 th Floor	-	1500 Sq Ft
6 th Floor	-	1500 Sq Ft
7 th Floor	-	1500 Sq Ft
Terrace Area	—	1500 Sq Ft
Total Area	-	13500 Sq Ft

BED DISTRIBUTION

Floor	Area in Sq Ft	Per Sq Ft	No. Bed	Description
Basement	1500			<ul style="list-style-type: none"> • Food Court
Ground	1500			<ul style="list-style-type: none"> • Pharmacy • Diagnostic Centre • Pathology • ATM
1	1500			<ul style="list-style-type: none"> • OPD • Reception • Waiting Room, • Consulting room • Staff Dressing Room
2	1500		10 05	<ul style="list-style-type: none"> • ICU • OT • Ophthalmology • Dental Physiotherapy
3	1500	50	35	<ul style="list-style-type: none"> • Deluxe Room
4	1500	50	30	<ul style="list-style-type: none"> • AC
5	1500	50	30	<ul style="list-style-type: none"> • AC
6	1500	50	45	<ul style="list-style-type: none"> • General (Male)
7	1500	50	45	<ul style="list-style-type: none"> • General (Female)
Terrace	1500			<ul style="list-style-type: none"> • Store
	Total No. Beds		200	

INVESTMENT

One Time Investment			
Description	Qty	Rate	Amount
Cost of Building	13500	25,000	337,500,000
Registration & Stamp Duty	1	27,000,000	27,000,000
Consultation Charges	1	3,375,000	3,375,000
Architect & Consultant	1	5,000,000	5,000,000
Permission	1	5,000,000	5,000,000
Fixture & Furniture	1	7,500,000	7,500,000
AC 25x20k	1	750,000	750,000
pc, printer, Xerox	1	1,500,000	1,500,000
CCTV setup	1	400,000	400,000
Advertisement	1	1,000,000	1,000,000
stationary & Board	1	100,000	100,000
OT setup	5	6,000,000	30,000,000
ICU Setup	10	6,000,000	60,000,000
Physiotherapy Setup	1	6,000,000	6,000,000
Pathology setup	1	1,000,000	1,000,000
digital x-ray complete set	2	1,750,000	3,500,000
Ultra Sonic Machine	1	150,000	150,000
MRI - CT Scan	1	30,000,000	30,000,000
Colour Doppler Machine	1	2,000,000	2,000,000
CT Scan (seimens)	1	15,000,000	15,000,000
2D Echo (seimens)	1	500,000	500,000
ICU Ventilator Machine	30	2,500,000	75,000,000
ECG - EEG - EMG	30	150,000	4,500,000
Oxygen Machine Setup	1	20,000,000	20,000,000
DENTISTRY	2	1,500,000	3,000,000
ENT	2	500,000	1,000,000
Ophthalmology Setup	1	20,000,000	20,000,000
Miscellaneous expense	1	5,000,000	5,000,000
Ambulance	5	2,500,000	12,500,000
Surplus for 4 months	1	45,000,000	45,000,000
Inaugural Expense	1	1,500,000	1,500,000
Car	2	4,500,000	9,000,000
Admin office Near Station	1	15,000,000	15,000,000
	Total		748,775,000
	in Crore		75

MONTHLYFIXED EXPENSES

MONTHLY EXPENSE			
• Pharmacist	6	30,000	180,000
• Diagnostic	6	40,000	240,000
• Pathology	6	30,000	180,000
• OPD	12	60,000	720,000
• ICU	9	60,000	540,000
• Ward Boy / Nurse	36	25,000	900,000
• Doctor RMO	10	60,000	600,000
• Sweeper	5	20,000	100,000
• Aaya	6	25,000	150,000
• Visiting Doctors	1	800,000	800,000
• Electric Bill	1	200,000	200,000
• Maintenance (AC/PC)	30	5,000	150,000
• Maintenance (Equipment)	30	5,000	150,000
• Welfare	30	3,000	90,000
• Stationary	30	3,000	90,000
• Reception	6	25,000	150,000
• Incidental Expense	1	50,000	50,000
• Finance	1	4,500,000	4,500,000
• Advertisement	5	50,000	250,000
• Total			10,040,000
• Total		in Crore	1.00
• Total Per Day Expense		30	334,667

MONTHLY REVENUE 1ST MONTH

Account Head	1st Month			
Bed	40	5000	200,000	20%
Registration	40	5000	200,000	20%
Pharmacy	40	2000	80,000	20%
Diagnostic	40	3000	120,000	20%
Consultancy Fee	40	500	20,000	20%
Operation	10	25000	250,000	5%
OPD	40	500	20,000	20%
Pathology	40	1000	40,000	20%
ICU	10	10000	100,000	5%
Ophthalmology	10	5000	50,000	5%
Dental	10	2000	20,000	5%
		Daily Total	1,100,000	
		No. Days	30	
	Total Collection		33,000,000	3.30
	Expense	50%	16,500,000	1.65
	Total profit		16,500,000	1.65

Share Head	%age	Amount	In Lakh
Finance	40%	6,600,000	66.00
Development	20%	3,300,000	33.00
Promoter - Doctor	10%	1,650,000	16.50
Promoter - Planner	10%	1,650,000	16.50
Promoter - Finance	10%	1,650,000	16.50
Bad debt	5%	825,000	8.25
Charity	5%	825,000	8.25
	100%	16,500,000	165.00

MONTHLY REVENUE 2ND MONTH

Account Head	2nd Month			
Bed	50	5000	250,000	25%
Registration	50	5000	250,000	25%
Pharmacy	50	2000	100,000	25%
Diagnostic	50	3000	150,000	25%
Consultancy Fee	50	500	25,000	25%
Operation	20	25000	500,000	10%
OPD	50	500	25,000	25%
Pathology	50	1000	50,000	25%
ICU	20	10000	200,000	10%
Ophthalmology	20	5000	100,000	10%
Dental	20	2000	40,000	10%
		Total Collection	1,690,000	
		No. Days	30	
	Total Collection		50,700,000	5.07
	Expense	50%	25,350,000	2.54
	Total Profit		25,350,000	2.54

Share Head	%age	Amount	In Lakh
Finance	40%	10,140,000	101.40
Development	20%	5,070,000	50.70
Promoter - Doctor	10%	2,535,000	25.35
Promoter - Planner	10%	2,535,000	25.35
Promoter - Finance	10%	2,535,000	25.35
Bad debt	5%	1,267,500	12.68
Charity	5%	1,267,500	12.68
	100%	25,350,000	253.50

MONTHLY REVENUE 3RD MONTH

Account Head	3rd Month			
Bed	60	5000	300,000	30%
Registration	60	5000	300,000	30%
Pharmacy	60	2000	120,000	30%
Diagnostic	60	3000	180,000	30%
Consultancy Fee	60	500	30,000	30%
Operation	30	25000	750,000	15%
OPD	60	500	30,000	30%
Pathology	60	1000	60,000	30%
ICU	30	10000	300,000	15%
Ophthalmology	30	5000	150,000	15%
Dental	30	2000	60,000	15%
		Daily Collection	2,280,000	
		No. Days	30	
	Total Collection		68,400,000	6.84
	Expense	50%	34,200,000	3.42
	Total profit		34,200,000	3.42
Share Head		%age	Amount	In Lakh
Finance		40%	13,680,000	136.80
Development		20%	6,840,000	68.40
Promoter - Doctor		10%	3,420,000	34.20
Promoter - Planner		10%	3,420,000	34.20
Promoter - Finance		10%	3,420,000	34.20
Bad debt		5%	1,710,000	17.10
Charity		5%	1,710,000	17.10
		100%	34,200,000	342.00

MONTHLY REVENUE 4TH MONTH

Account Head	4th Month			
Bed	70	5000	350,000	35%
Registration	70	5000	350,000	35%
Pharmacy	70	2000	140,000	35%
Diagnostic	70	3000	210,000	35%
Consultancy Fee	70	500	35,000	35%
Operation	40	25000	1,000,000	20%
OPD	70	500	35,000	35%
Pathology	70	1000	70,000	35%
ICU	40	10000	400,000	20%
Ophthalmology	40	5000	200,000	20%
Dental	40	2000	80,000	20%
	Daily Collection		2,870,000	
	No. Days		30	
	Total Collection		86,100,000	8.61
	Expense	50%	43,050,000	4.31
	Total profit		43,050,000	4.31
Share Head		%age	Amount	In Lakh
Finance		40%	17,220,000	172.20
Development		20%	8,610,000	86.10
Promoter - Doctor		10%	4,305,000	43.05
Promoter - Planner		10%	4,305,000	43.05
Promoter - Finance		10%	4,305,000	43.05
Bad debt		5%	2,152,500	21.53
Charity		5%	2,152,500	21.53
		100%	43,050,000	430.50

MONTHLY REVENUE 5TH MONTH

Account Head	5th Month			
Bed	80	5000	400,000	40%
Registration	80	5000	400,000	40%
Pharmacy	80	2000	160,000	40%
Diagnostic	80	3000	240,000	40%
Consultancy Fee	80	500	40,000	40%
Operation	50	25000	1,250,000	25%
OPD	80	500	40,000	40%
Pathology	80	1000	80,000	40%
ICU	50	10000	500,000	25%
Ophthalmology	50	5000	250,000	25%
Dental	50	2000	100,000	25%
			3,460,000	
		No. Days	30	
	Total Collection		103,800,000	10.38
	Expense	50%	51,900,000	5.19
	Total profit		51,900,000	5.19
Share Head		%age	Amount	In Lakh
Finance		40%	20,760,000	207.60
Development		20%	10,380,000	103.80
Promoter - Doctor		10%	5,190,000	51.90
Promoter - Planner		10%	5,190,000	51.90
Promoter - Finance		10%	5,190,000	51.90
Bad debt		5%	2,595,000	25.95
Charity		5%	2,595,000	25.95
		100%	51,900,000	519.00

MONTHLY REVENUE 6TH MONTH

Account Head	6th Month			
Account Head	100	5000	500,000	50%
Bed	100	5000	500,000	50%
Registration	100	2000	200,000	50%
Pharmacy	100	3000	300,000	50%
Diagnostic	100	500	50,000	50%
Consultancy Fee	60	25000	1,500,000	30%
Operation	100	500	50,000	50%
OPD	100	1000	100,000	50%
Pathology	60	10000	600,000	30%
ICU	60	5000	300,000	30%
Ophthalmology	60	2000	120,000	30%
	Daily Collection		4,220,000	
	No. Days		30	
	Total Collection		126,600,000	12.66
	Expense	50%	63,300,000	6.33
	Total profit		63,300,000	6.33
Share Head		%age	Amount	In Lakh
Finance		40%	25,320,000	253.20
Development		20%	12,660,000	126.60
Promoter - Doctor		10%	6,330,000	63.30
Promoter - Planner		10%	6,330,000	63.30
Promoter - Finance		10%	6,330,000	63.30
Bad debt		5%	3,165,000	31.65
Charity		5%	3,165,000	31.65
		100%	63,300,000	633.00

PROFIT & LOSS A/C OF 6 MONTH & 1 YEAR PROJECTION

Profit & Loss A/c (Yearly Projection)										
	1st Month	2nd Month	3rd Month	4th Month	5th Month	6th Month	Half Yearly Total	x	Yearly Total	
Monthly Revenue	3.30	5.07	6.84	8.61	10.38	12.66	46.86	2	93.72	
Monthly Expense	1.65	2.54	3.42	4.31	5.19	6.33	23.43	2	46.86	
Monthly Profit	1.65	2.54	3.42	4.31	5.19	6.33	23.43	2	46.86	

Share Head	%age	Amt in Cr.	Amt in Cr.	Amt in Cr.	Amt in Cr.	Amt in Cr.	Amt in Cr.	Half Yearly Total	Yearly Total
Finance	30%	0.50	0.76	1.03	1.29	1.56	1.90	7.03	14.06
Development	30%	0.50	0.76	1.03	1.29	1.56	1.90	7.03	14.06
Promoter - Doctor	10%	0.17	0.25	0.34	0.43	0.52	0.63	2.34	4.69
Promoter - Admin	10%	0.17	0.25	0.34	0.43	0.52	0.63	2.34	4.69
Promoter - Finance	10%	0.17	0.25	0.34	0.43	0.52	0.63	2.34	4.69
Bad Debt	5%	0.08	0.13	0.17	0.22	0.26	0.32	1.17	2.34
Charity	5%	0.08	0.13	0.17	0.22	0.26	0.32	1.17	2.34
	100%	1.65	2.54	3.42	4.31	5.19	6.33	23.43	46.86


1st Year Tentative Prospects

Account Head	1st Year Tentative Prospect			
Bed	60	5000	300,000	30%
Registration	60	5000	300,000	30%
Pharmacy	40	2000	80,000	20%
Diagnostic	50	3000	150,000	25%
Consultant	50	500	25,000	25%
Operation	40	25000	1,000,000	20%
OPD	50	500	25,000	25%
Pathology	50	1000	50,000	25%
ICU	40	10000	400,000	20%
Ophthalmology	40	5000	200,000	20%
Dental	40	2000	80,000	20%
			2,610,000	
		No. Days	30	
	Total Collection (Monthly)		78,300,000	7.83
	Total Months		12	12.00
	Annual Total		939,600,000	93.96
	Expense	50%	469,800,000	46.98
	Total Profit		469,800,000	46.98
	Share Head	%age	Amount	In CR (25% AR)
	Finance	40%	187,920,000	18.79
	Development	20%	93,960,000	9.40
	Promoter - Dr	10%	46,980,000	4.70
	Promoter - Planner	10%	46,980,000	4.70
	Promoter - Marketing	10%	46,980,000	4.70
	Bad Debt	5%	23,490,000	2.35
	Charity	5%	23,490,000	2.35
		100%	469,800,000	46.98

2nd Year Tentative Prospects

Account Head	2nd Year Tentative Prospect			
Bed	80	5000	400,000	40%
Registration	80	5000	400,000	40%
Pharmacy	80	2000	160,000	40%
Diagnostic	80	3000	240,000	40%
Consultant	80	500	40,000	40%
Operation	70	25000	1,750,000	35%
OPD	80	500	40,000	40%
Pathology	70	1000	70,000	35%
ICU	70	10000	700,000	35%
Ophthalmology	60	5000	300,000	30%
Dental	60	2000	120,000	30%
			4,220,000	
		No. Days	30	
	Total Collection (Monthly)		126,600,000	12.66
	Total Months		12	12.00
			1,519,200,000	151.92
	Expense	50%	759,600,000	75.96
	Total Profit		759,600,000	75.96
	Share Head	%age	Amount	In CR (40% AR)
	Finance	40%	303,840,000	30.38
	Development	20%	151,920,000	15.19
	Promoter - Dr	10%	75,960,000	7.60
	Promoter - Planner	10%	75,960,000	7.60
	Promoter - Marketing	10%	75,960,000	7.60
	Bad Debt	5%	37,980,000	3.80
	Charity	5%	37,980,000	3.80
		100%	759,600,000	75.96

3rd Year Tentative Prospects

Account Head	3rd Year Tentative Prospect			
Bed	100	5000	500,000	50%
Registration	100	5000	500,000	50%
Pharmacy	100	2000	200,000	50%
Diagnostic	100	3000	300,000	50%
Consultant	100	500	50,000	50%
Operation	80	25000	2,000,000	40%
OPD	80	500	40,000	40%
Pathology	80	1000	80,000	40%
ICU	80	10000	800,000	40%
Ophthalmology	80	5000	400,000	40%
Dental	80	2000	160,000	40%
			5,030,000	
		No. Days	30	
	Total Collection (Monthly)		150,900,000	15.09
	Total Months		12	12.00
			1,810,800,000	181.08
	Expense	50%	905,400,000	90.54
	Total Profit		905,400,000	90.54
				
	Share Head	%age	Amount	In CR (50% AR)
	Finance	40%	362,160,000	36.22
	Development	20%	181,080,000	18.11
	Promoter - Dr	10%	90,540,000	9.05
	Promoter - Planner	10%	90,540,000	9.05
	Promoter - Marketing	10%	90,540,000	9.05
	Bad Debt	5%	45,270,000	4.53
	Charity	5%	45,270,000	4.53
		100%	905,400,000	90.54

4th Year Tentative Prospects

Account Head	4th Year Tentative Prospect			
Bed	120	5000	600,000	60%
Registration	120	5000	600,000	60%
Pharmacy	120	2000	240,000	60%
Diagnostic	120	3000	360,000	60%
Consultant	120	500	60,000	60%
Operation	100	25000	2,500,000	50%
OPD	100	500	50,000	50%
Pathology	100	1000	100,000	50%
ICU	100	10000	1,000,000	50%
Ophthalmology	100	5000	500,000	50%
Dental	100	2000	200,000	50%
			6,210,000	
		No. Days	30	
	Total Collection (Monthly)		186,300,000	18.63
	Total Months		12	12.00
			2,235,600,000	223.56
	Expense	50%	1,117,800,000	111.78
	Total Profit		1,117,800,000	111.78
	Share Head	%age	Amount	In CR (60% AR)
	Finance	40%	447,120,000	44.71
	Development	20%	223,560,000	22.36
	Promoter - Dr	10%	111,780,000	11.18
	Promoter - Planner	10%	111,780,000	11.18
	Promoter - Marketing	10%	111,780,000	11.18
	Bad Debt	5%	55,890,000	5.59
	Charity	5%	55,890,000	5.59
		100%	1,117,800,000	111.78

5th Year Tentative Prospects

Account Head	5th Year Tentative Prospect			
Bed	140	5000	700,000	70%
Registration	140	5000	700,000	70%
Pharmacy	140	2000	280,000	70%
Diagnostic	140	3000	420,000	70%
Consultant	140	500	70,000	70%
Operation	120	25000	3,000,000	60%
OPD	120	500	60,000	60%
Pathology	120	1000	120,000	60%
ICU	120	10000	1,200,000	60%
Ophthalmology	120	5000	600,000	60%
Dental	120	2000	240,000	60%
			7,390,000	
		No. Days	30	
	Total Collection (Monthly)		221,700,000	22.17
	Total Months		12	12.00
			2,660,400,000	266.04
	Expense	50%	1,330,200,000	133.02
	Total Profit		1,330,200,000	133.02
	Share Head	%age	Amount	In CR (70% AR)
	Finance	40%	532,080,000	53.21
	Development	20%	266,040,000	26.60
	Promoter - Dr	10%	133,020,000	13.30
	Promoter - Planner	10%	133,020,000	13.30
	Promoter - Marketing	10%	133,020,000	13.30
	Bad Debt	5%	66,510,000	6.65
	Charity	5%	66,510,000	6.65
		100%	1,330,200,000	133.02

Profit & Loss A/c (5 Year Projection)

Profit & Loss A/c (5 Year Projection)						
	1st Year	2nd Year	3rd Year	4th Year	5th Year	Total (Cr)
Yearly Revenue	93.96	151.92	181.08	223.56	266.04	916.56
Yearly Expense	46.98	75.96	90.54	111.78	133.02	458.28
Yearly Profit	46.98	75.96	90.54	111.78	133.02	458.28
	1st Year	2nd Year	3rd Year	4th Year	5th Year	Total
Share Head	Amt in Cr.	Amt in Cr.	Amt in Cr.	Amt in Cr.	Amt in Cr.	(Avg 49%/anum
Finance (40%)	18.79	30.38	36.22	44.71	53.21	183.31
Development (20%)	9.40	15.19	18.11	22.36	26.60	91.66
Promoter - Doctor (10%)	4.70	7.60	9.05	11.18	13.30	45.83
Promoter - Admin (10%)	4.70	7.60	9.05	11.18	13.30	45.83
Promoter - Finance (10%)	4.70	7.60	9.05	11.18	13.30	45.83
Bad Debt (5%)	2.35	3.80	4.53	5.59	6.65	22.91
Charity (5%)	2.35	3.80	4.53	5.59	6.65	22.91
	46.98	75.96	90.54	111.78	133.02	458.28

Thank you

and appreciate for your precious time.